



High-Content label-free imaging

With *experiments run in parallel* our Digital Holographic Microscope (DHM[®]) will:

- increase your throughput
- find active compounds faster
- improve your drug discovery process

Unique advantages with our DHM[®]



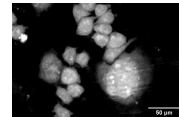
Compatible with all multi-well plates up to **384** wells



Use up to **6** magnifications (2.5x to 100x/oil)



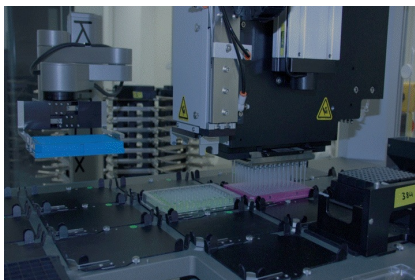
Only **0.5 ms** to acquire a single image



Correlate quantitative phase with **fluorescence**

→ **versatile instruments to answer all your experimental needs**

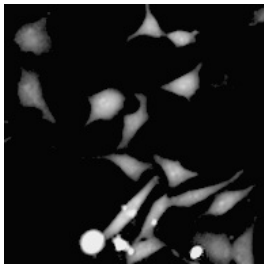
An innovative workhorse for a screening facility!



"Our DHM[®] microscope at the Biomolecular Screening Facility is routinely used for image-based screens, for its label-free and non-invasive properties, and also in the context of correlation with standard fluorescence."

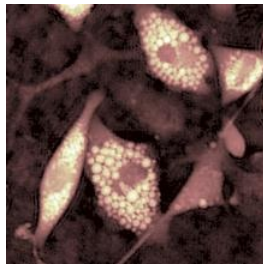
Prof. **Gerardo Turcatti**
Head of the facility

Pioneering applications have become standards



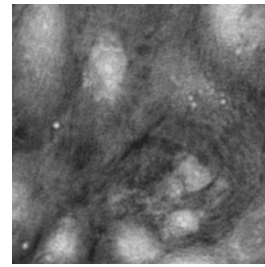
Cytotoxic assays

The cytotoxic effect of thousands of different compounds are quickly [assessed](#) with DHM[®].



Adipocyte quantification

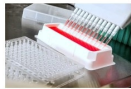
DHM[®] brings new [drugs discovery](#) involved in adipogenesis.



Cardiomyocytes

Beating pattern and its alteration in presence of drugs is finely [quantified](#) by DHM[®].

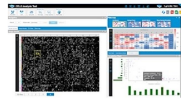
[More examples applications](#)



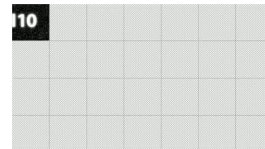
1. Culture your cells as usual



2. Acquisition single or multisite



3. Investigate bio processes



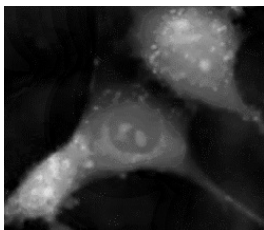
Automated acquisition

[Parallelize](#) your experiments to save time and improve your throughput

Simple workflow

No sample preparation (no dye to add, no washing steps), quick and easy setup, automated acquisition and data extraction with our dedicated life sciences [analysis software](#)

How does it work?



DHM[®] use holography to measure the phase of light which contains information on:

- **thickness** → shape and morphology
- **dry mass** → intracellular content

These two endogenous **bio-markers** are affected by the **health status** of the cell and its undergoing **bioprocesses**.

[The science behind](#)



Do you want to discover
our products remotely?

Book a live demo now



**Contact us or
book a live demo**

Join our DHM users' forest of more than **7'000 trees!**

For any DHM® purchase based on a remote live-demo, Lyncée commits to [plant trees](#) through the non-profit organization [OneTreePlanted](#)



High-precision scientific equipment.
Proudly manufactured by us in Switzerland.



Lyncée Tec

Innovation park, Bâtiment A, 1015, Lausanne, Switzerland

This email was sent to {{contact.EMAIL}}
You've received it because you've subscribed to our newsletter.

[Unsubscribe](#)

